

York Museums Trust

2016-21

Capital Projects

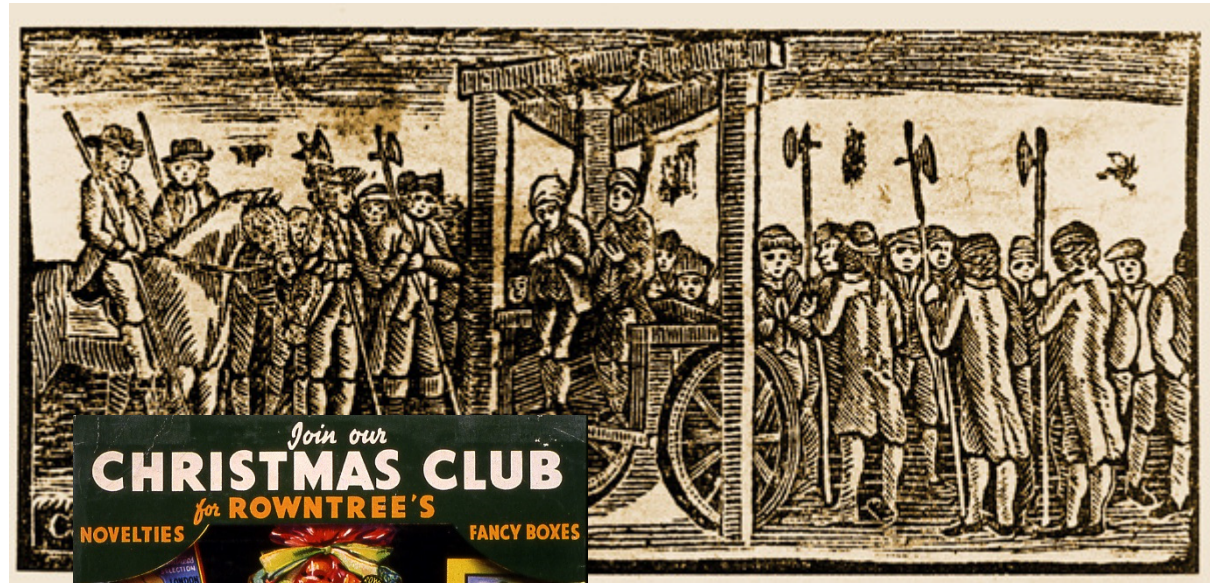
York Castle Museum



York Castle Museum



York Castle Museum



York Castle Museum



York Castle Museum



Collections rationalisation at Birch Park



York Museum Gardens



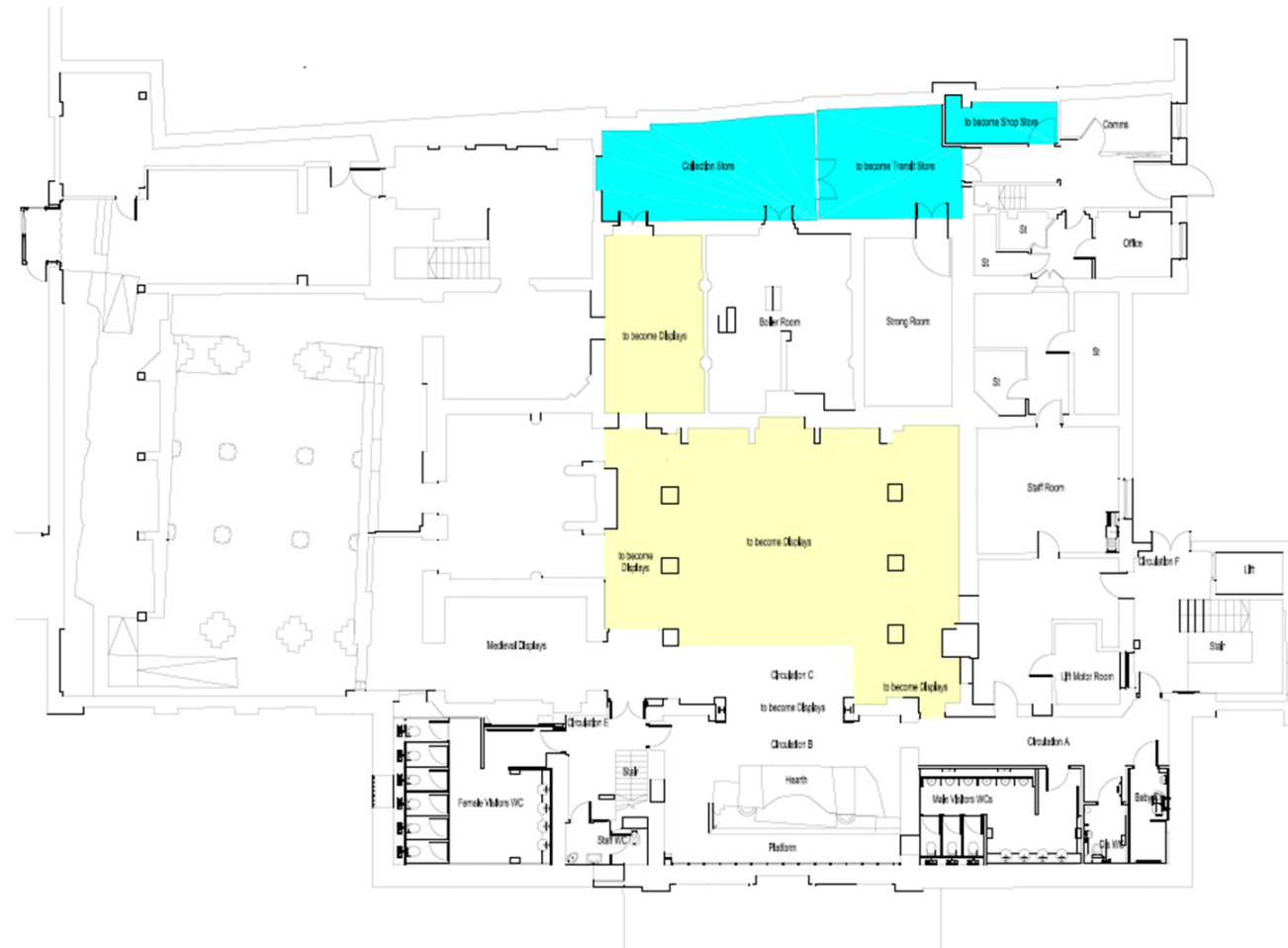
York Museum Gardens



Yorkshire Museum



Yorkshire Museum



Capital programme costs

- York Castle Museum £15m +
Bid preparation: £700,000
- Collections storage at Birch Park £1.5m
- York Museum Gardens £1m
- Yorkshire Museum £800,000